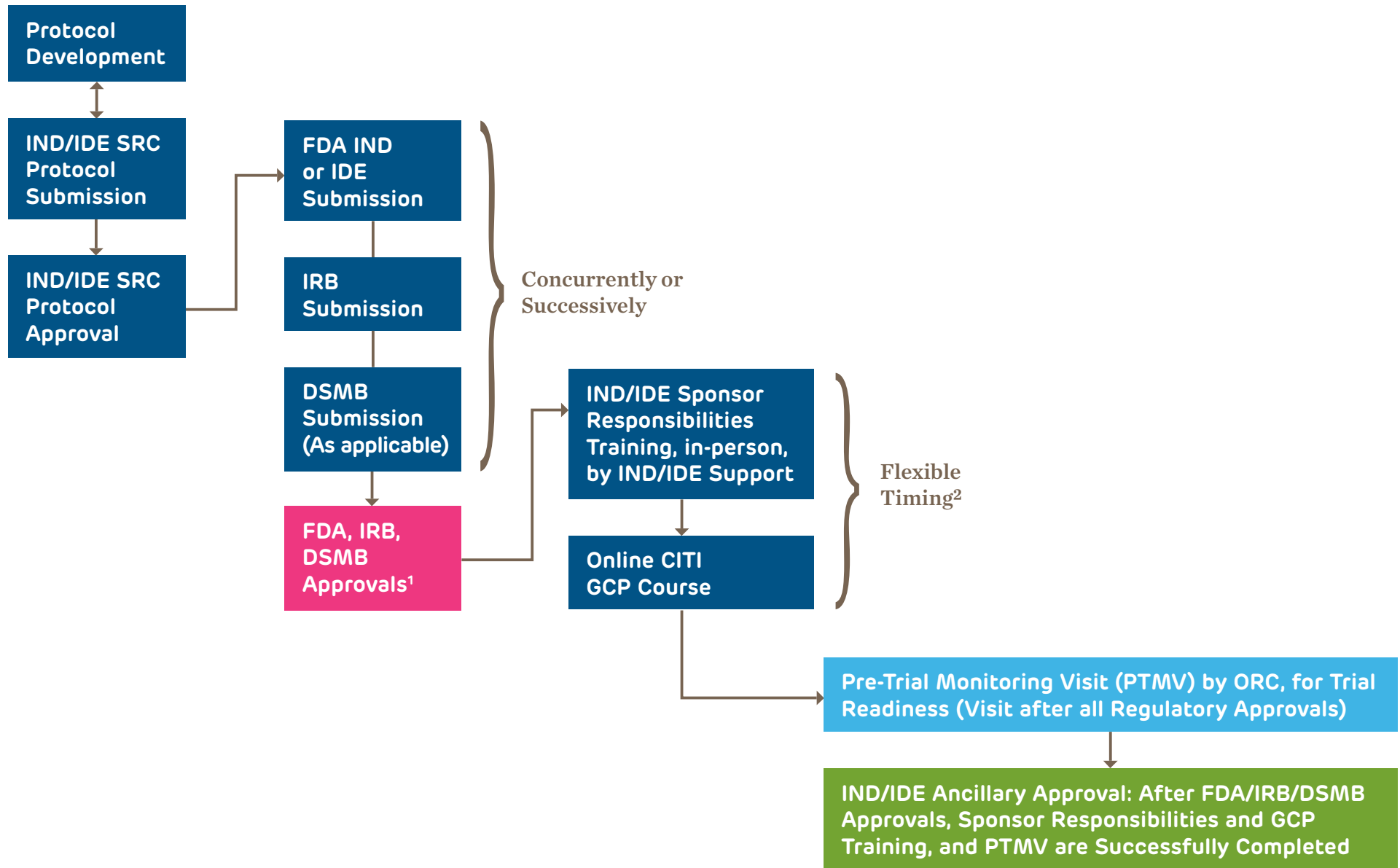


# CHOP IND/IDE REGULATORY AND TRAINING PROCESS STEPS



<sup>1</sup> Regulatory approvals may also include DEA or OBA-RAC, as applicable

<sup>2</sup> Training can be taken at ANY time during this process, before IRB approval. There are training requirements for single subject (emergency and non-emergency) INDs/IDEs, as outlined in the IND/IDE Sponsor Responsibilities Training Policy, August 2017