

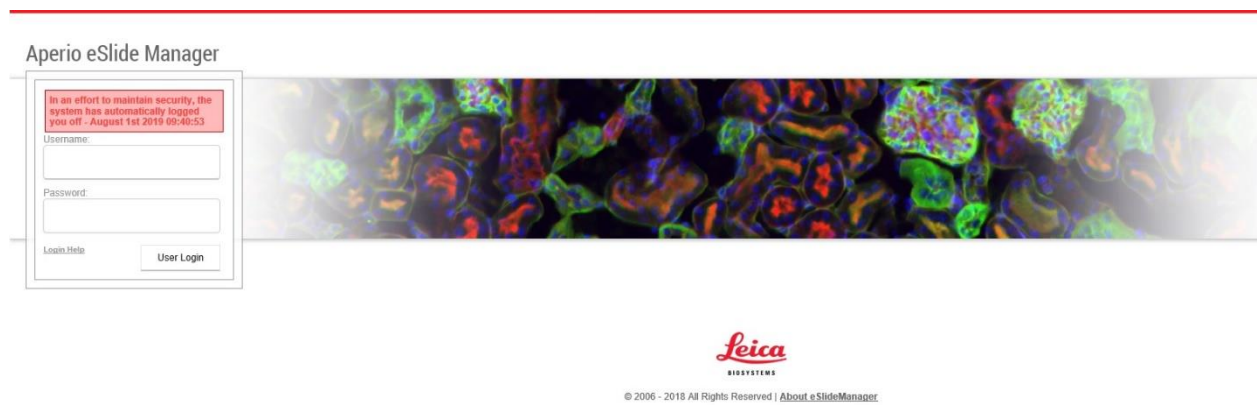
PATHOLOGY CORE

Accessing E-slide Server for Slides

Scanned slides can be accessed by logging onto the CHOP server from any computer via the website here:

<http://pathcorescans.research.chop.edu>

Save this address in your favorites for easy access. If you forget the address you can always google “CHOP Path Core” to find our website and there is a link on our homepage. Once you reach the server you should see the following screen:



You will need to type in your username and password to access the server. If you don't have an account contact us for access. Your username will give you access to slides that are scanned in any “datagroup” or PI/Lab that you have access to. Once you are logged in you will need to click continue after the RUO warning to proceed:

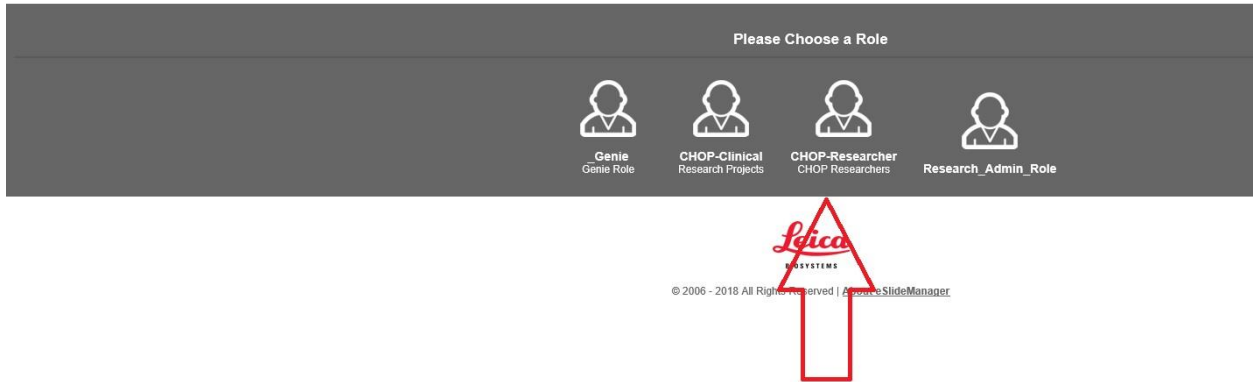


On the next screen you will choose the appropriate role (CHOP or External Researcher):

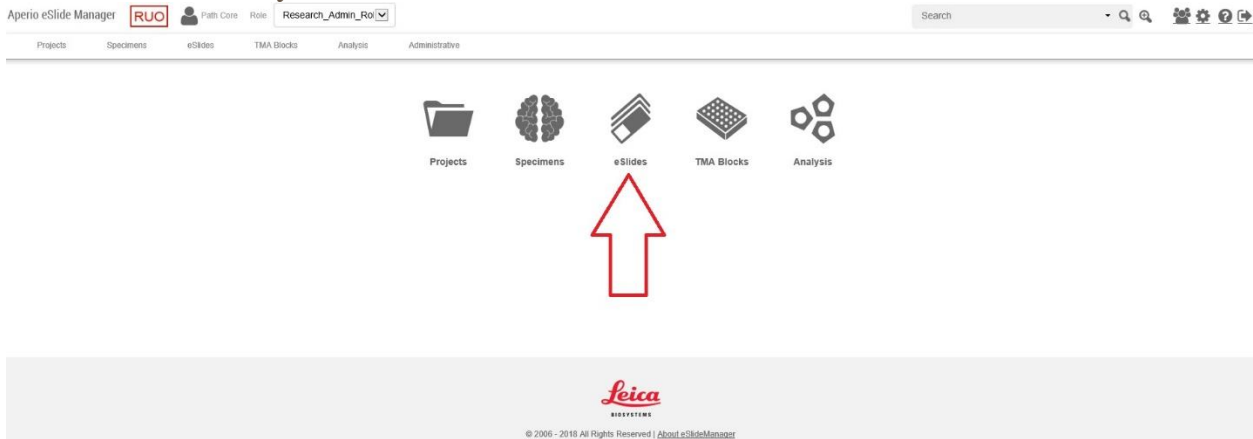
PATHOLOGY CORE

Accessing E-slide Server for Slides

Aperio eSlide Manager



On the next screen you will select E-Slides:



Now you should see the slides listed for any lab that you have access to. E-slide manager is a database that allows you to see the slides that have been scanned onto our server and select slides that you would like to review:

PATHOLOGY CORE

Accessing E-slide Server for Slides

Sort	View Images	Open Data	Analyze	Delete	Move	Copy	Assign To	Clone To	Export Data	Annotations	Column 1 of 42				
<input type="checkbox"/>	Label	Image	PC Number	PI	Delivered by	Specimen Number	Slide Number	Study	Comment	Data Group	Stain Other	Stain List	Date Received	Stain Results	File Location
<input type="checkbox"/>						Hu Tonsil 8			Tim-3 1:50 E2-20	Path Core		Tim-3 C.S. 45208	2016/02/04 12:18:28		\\vresmb03.research.chop.edu\ape ages2\2016-02-04\191834.svs
<input type="checkbox"/>						Hu Tonsil 3			CD19 1:200 E2-20	Path Core		CD19	2016/02/04 12:14:26		\\vresmb03.research.chop.edu\ape ages2\2016-02-04\191833.svs
<input type="checkbox"/>						Hu Tonsil			CD138 Dako M7228 1:200 E2-20 Refine Protocol	Path Core		CD138- DAKO	2016/01/15 16:06:12		\\vresmb03.research.chop.edu\ape ages2\2016-01-15\189532.svs
<input type="checkbox"/>						Hu Tonsil			Plasma Cell Dako M7077 1:50 E2-20 Refine Protocol	Path Core		Plasma Cell	2016/01/15 16:03:21		\\vresmb03.research.chop.edu\ape ages2\2016-01-15\189531.svs
<input type="checkbox"/>			PC13- 826		Tricia Bhatti	Tricia	CHOP Normal Array 2	10		Path Core		H&E	2014/02/12 15:28:03		\\vresmb03.research.chop.edu\ape ages2\2014-02-12\134473.svs

To view slides, you have a couple of options:

Image Scope:

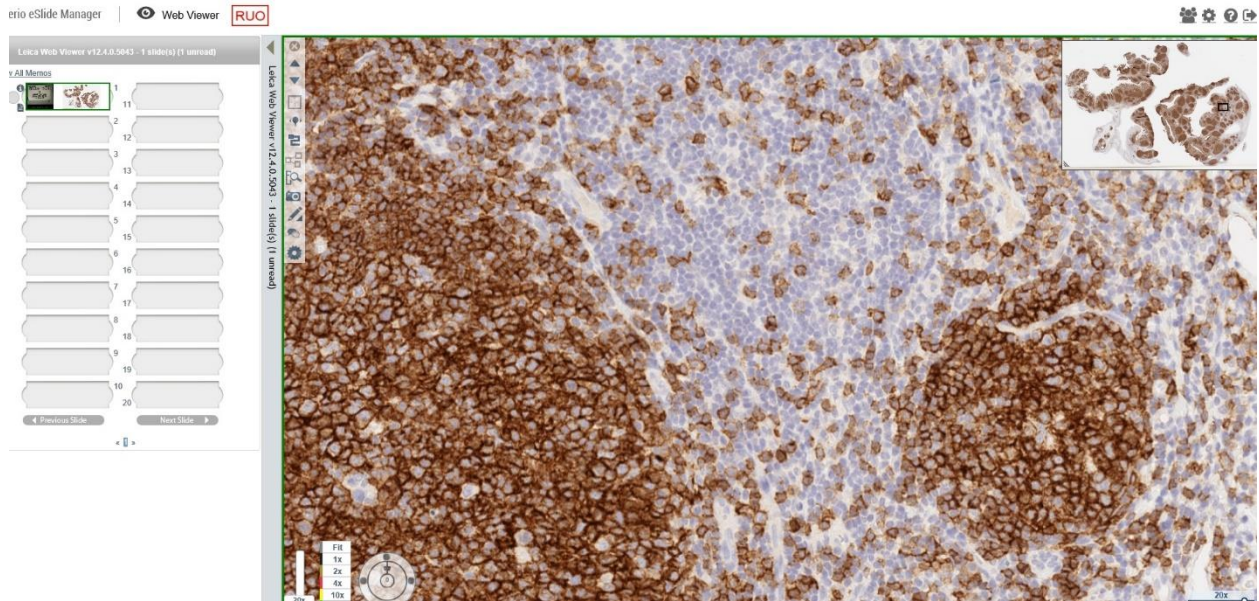
This is the full function viewer that is available to download free of charge from the Leica Website. You can access the website by clicking on the Leica logo on the bottom of the screen in E-slide manager. Image scope is PC only so this cannot be installed on a Mac. Once you have Image Scope installed it should open automatically when you left click on the thumbnail image of a slide in E-slide manager. You will need image scope in order to export TIFF files, access the image analysis algorithms, or to manipulate the color channels for IF scans

Web Viewer:

This is a viewer that can also be run within your internet browser via the server. No software is needed to install and this will work on any PC or Mac. In order to open a slide with the Web Viewer hold down the “W” key on your keyboard while left clicking on the thumbnail for a slide. Once open in the webscope viewer you will be able to review your slides as well as save images, rotate the image, and do some simple annotations.

PATHOLOGY CORE

Accessing E-slide Server for Slides



These instructions are designed to give you quick access to slides that we have scanned on the Path Core Server. If you would like more in depth instructions or training for the image analysis algorithms please contact us to schedule a training session.