

**Congratulations to our Children's Hospital of Philadelphia-based Perelman School of Medicine faculty with research programs who have been appointed to their faculty position in 2023.**



### **Humera Ahmed, MD**

Attending Cardiologist, Cardiac Center  
Assistant Professor of Pediatrics  
Perelman School of Medicine  
University of Pennsylvania



### **Pilar Anton-Martin, MD, PhD**

Attending Physician, Cardiac Center  
Assistant Professor of Anesthesiology and Critical Care  
Perelman School of Medicine  
University of Pennsylvania



### **Mariko Bennett, MD, PhD**

Attending Neurologist, Department of Neurology  
Assistant Professor of Neurology  
Perelman School of Medicine  
University of Pennsylvania



## **Ian Campbell, MD, PhD**

Attending Physician, Department of Biomedical and Health Informatics

Assistant Professor of Pediatrics, Neonatology & Newborn Services  
Perelman School of Medicine  
University of Pennsylvania



## **Molly F. Davis, PhD**

Research Psychologist, Department of Child and Adolescent Psychiatry & Behavioral Science

Assistant Professor of Psychiatry  
Perelman School of Medicine  
University of Pennsylvania



## **Jorge Delgado, MD**

Attending Physician, Department of Radiology

Assistant Professor of Radiology  
Perelman School of Medicine  
University of Pennsylvania



## **Yina Dong, PhD**

Research Assistant Professor  
Perelman School of Medicine  
University of Pennsylvania



## **Jonathan J. Edwards, MD**

Attending Physician, Division of Cardiology  
Assistant Professor of Pediatrics, Cardiology  
Perelman School of Medicine  
University of Pennsylvania



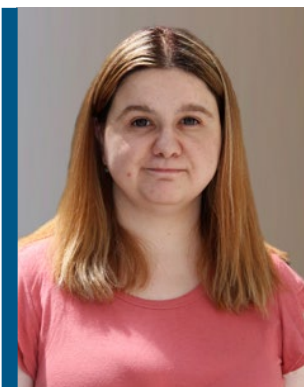
## **Caitlin Elgarten, MD, MSCE**

Attending Physician, Cancer Center  
Assistant Professor of Pediatrics, Oncology  
Perelman School of Medicine  
University of Pennsylvania



## **Jessica B. Foster, MD**

Attending Physician, Department of Pediatrics, Division of Oncology  
Assistant Professor of Pediatrics, Oncology  
Perelman School of Medicine  
University of Pennsylvania



## **Liya Gendler, DO**

Attending Radiologist, Department of Radiology  
Assistant Professor of Radiology  
Perelman School of Medicine  
University of Pennsylvania



## **Melissa A. Gilbert, PhD**

Research Assistant Professor of Pathology and Laboratory Medicine  
Perelman School of Medicine  
University of Pennsylvania



## **Karl Godlewski, MD**

Attending Physician, Division of Urology  
Assistant Professor of Surgery  
Perelman School of Medicine  
University of Pennsylvania



## **Lisa M. Guay-Woodford, MD**

Senior Advisor for Clinical and Translational Research Initiatives  
Director, Inherited Renal Diseases Program  
Professor of Pediatrics, Nephrology  
Perelman School of Medicine  
University of Pennsylvania



## **Sara Handley, MD, MSCE**

Associate Fellow  
Leonard Davis Institute of Health Economics  
Attending Neonatologist, Division of Neonatology  
Assistant Professor of Pediatrics  
Perelman School of Medicine  
University of Pennsylvania



## **Heidi M. Herrick, MD**

Attending Physician, CHOP Newborn Care

Director, Neonatal Audiovisual Recording, CHOP and HUP

Lead, Neonatal Tracheal Intubation Safety Committee at CHOP

Assistant Professor of Pediatrics, Neonatology & Newborn Services

Perelman School of Medicine

University of Pennsylvania

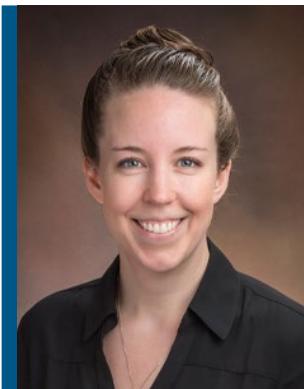


## **Srdjan Joksimovic, PhD**

Research Assistant Professor of Neurology

Perelman School of Medicine

University of Pennsylvania



## **Allison Barz Leahy, MD, MSCE**

Attending Physician, CHOP Newborn Care

Richard & Sheila Sanford Endowed Chair in Pediatric Oncology

Assistant Professor of Pediatrics, Oncology

Perelman School of Medicine

University of Pennsylvania



## **Karla Leavens, MD, PhD**

Pediatric Endocrinologist, Department of Endocrinology

Assistant Professor of Pediatrics, Endocrinology and Diabetes

Perelman School of Medicine

University of Pennsylvania



## **Bo Li, PhD**

Core Faculty, Center for Computational and Genomic Medicine  
Associate Professor of Pathology and Laboratory Medicine  
Perelman School of Medicine  
University of Pennsylvania



## **Neal Mathew, MD**

Research Assistant Professor of Pediatrics  
Perelman School of Medicine  
University of Pennsylvania



## **Jay Mehta, MD, MS**

Clinical Director, Division of Rheumatology  
Associate Program Director for the Pediatrics Residency Program  
Fellowship Program Director, Pediatric Rheumatology  
Attending Physician, Division of Rheumatology  
Assistant Professor of Clinical Pediatrics  
Perelman School of Medicine at the University of Pennsylvania



## **Asif Padiyath, MBBS**

Attending Anesthesiologist, Division of Cardiothoracic  
Anesthesiology  
Assistant Professor of Anesthesiology and Critical Care  
Perelman School of Medicine  
University of Pennsylvania



## **Giulia Pavani**

Associate Professor of Pathology and Laboratory Medicine  
Perelman School of Medicine  
University of Pennsylvania



## **Madiha Raees, MD**

Attending Physician, Division of Critical Care Medicine  
Assistant Professor of Anesthesiology and Critical Care  
Perelman School of Medicine  
University of Pennsylvania



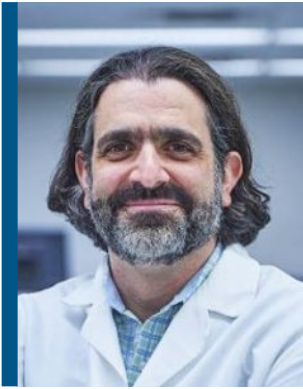
## **Irit R. Rasooly, MD, MSCE**

Attending Physician, Department of Pediatrics  
Assistant Professor of Pediatrics  
Perelman School of Medicine  
University of Pennsylvania



## **Sara Reis Teixeira, MD, PhD**

Assistant Professor of Radiology  
Perelman School of Medicine  
University of Pennsylvania



## **Adam Resnick, PhD**

Director, Center for Data-Driven Discovery in Biomedicine (D3b)  
Director, Neurosurgical Translational Research Scientific Chair,  
Children's Brain Tumor Tissue Consortium (CBTTC)  
Scientific Chair, Pediatric Neuro-Oncology Consortium (PNOC)  
Alexander B. Wheeler Endowed Chair in Neurosurgical Research  
Research Professor of Neurosurgery  
Perelman School of Medicine at the University of Pennsylvania



## **Simone Riedel, PhD**

Research Assistant Professor of Pediatrics, Oncology  
Perelman School of Medicine  
University of Pennsylvania



## **Luis Sequera-Ramos, MD**

Attending Anesthesiologist, Department of Anesthesiology and  
Critical Care Medicine  
Assistant Professor of Anesthesiology and Critical Care  
Perelman School of Medicine  
University of Pennsylvania



## **Alanna Strong, MD, PhD**

Attending Physician, Division of Human Genetics  
Assistant Professor of Pediatrics, Human Genetics  
Perelman School of Medicine  
University of Pennsylvania





## **Lara Varpio, PhD**

Professor of Pediatrics, Emergency Medicine  
Perelman School of Medicine  
University of Pennsylvania



## **Bernarda Viteri Baquerizo, MD**

Assistant Professor of Pediatrics, Nephrology  
Perelman School of Medicine  
University of Pennsylvania



## **Lauren K. White, PhD**

Research Assistant Professor of Psychiatry  
Perelman School of Medicine  
University of Pennsylvania



## **Adam J. Wolpaw, MD, PhD**

Attending Physician, Division of Oncology  
Assistant Professor of Pediatrics, Oncology  
Perelman School of Medicine  
University of Pennsylvania



## **Joseph Yellin**

Assistant Professor

Perelman School of Medicine

University of Pennsylvania